



Support Immune Homeostasis

What is Symetrian™?

Symetrian™ is a standardized, patent pending, Aloe-based composition for a healthy immune homeostasis.* It is clinically proven to promote rapid immune cell activation and production of circulating TCRγδ+ Gamma delta T cells, suggestive of its heightened immune surveillance at portals of entry, providing immediate immune response.* Symetrian™ has also been clinically proven to increase the levels of glutathione peroxidase (GSH-Px) highlighting its strong antioxidant activity.* Symetrian™ is composed of plant extracts standardized for specific polysaccharides and polyphenols from three botanicals with a long history of safe human consumption for immune support, *Aloe barbadensis* (Aloe vera), *Poria cocos* and Rosemary (*Rosmarinus oicinalis*).

What Makes Symetrian™ Unique?

- Standardized, patent-pending, novel Aloe-based composition with long history of safe human consumption for immune support*
- Suitable as a long-term daily supplement for all populations.
- Extensive scientific evidence including two randomized, double-blind placebo-controlled, IRB approved clinical studies
- Clinically proven to support maintenance of healthy immunity homeostasis*
- Clinically proven to support cellular and humoral immunity by increasing TCRγδ+ Gamma delta T cells and IgG antibodies*

- Clinically proven to support healthy inflammatory response by maintaining healthy cytokine levels and cytokine responses*
- Clinically proven to support strong antioxidant activity*
- Clinically proven to support rapid immune activation and response*
- Clinically proven to activate Natural killer cells and Gamma delta T cells within hours*

Plant Origin

Derived from *Aloe vera* leaf gel powder, *Poria cocos* sclerotium extract and Rosemary leaf extract.

Applications

- Maintenance of immunity homeostasis*
- Provide heightened mucosal immunity at the portal of entry for increased immune surveillance and/or a robust response*
- Promote innate and adaptive immunity*
- Provide strong antioxidant activity*

Formulation

Can be used as an active agent alone or formulated with other cold/flu agents in tablets, capsules, gummi, gels, liquids, powders, bars and other delivery systems.

Physical Properties

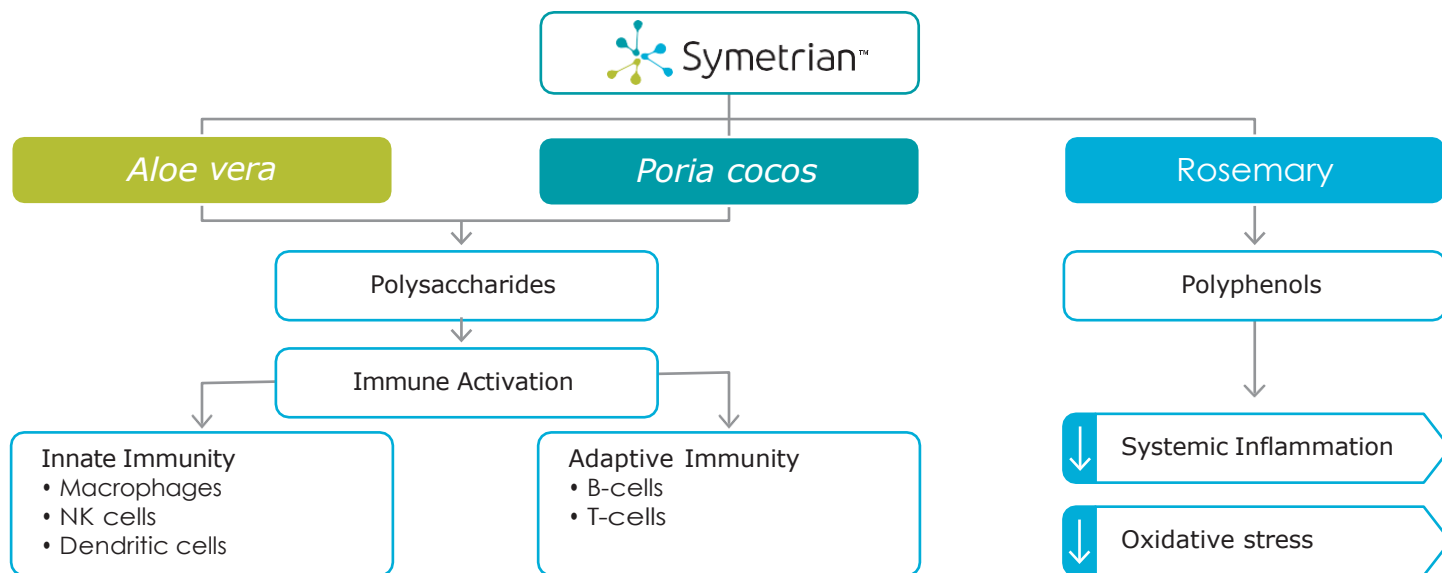
Brown colored powder easily suspended in water.

Mechanism of Action

Immune homeostasis and/or immune stimulation and modulation of Symetrian is derived from:

1. Stimulation of innate immunity
2. Enhancement of adaptive immunity
3. Suppression of systematic inflammation and oxidative stress

Fig. 1: Immune homeostasis effect of Symetrian™



Pre-Clinical Data on Acute Lung Injury and Oxidative Stress-Induced Immune Senescence

- Symetrian™ protected animals from Lipopolysaccharide (LPS)-induced sepsis (Figure 2)
- Symetrian™ supported health of lungs (Figure 3) in LPS-induced acute lung model, with reduction of key cytokines, chemokines (TNF- α , IL-6, IL-1, CRP, CINC-3)
- Symetrian™ increased survival rate in hyperoxia-induced oxidative stress mouse model (Figure 4)
- Symetrian™ decreased bacterial load in the broncho-alveolar lavage in hyperoxia-induced oxidative stress mouse model, highlighting its ability in clearing airway bacteria in the lung (Figure 5)
- Symetrian™ supported the body's natural response to protect thymus against oxidative stress-induced immune senescence, which may affect the body's ability to mount an immune response (Figure 6)
- Symetrian™ supported increased SOD activity and increased anti-oxidative protein NRF2, indicating an increased capacity to neutralize free radicals (Figure 7 & 8)
- Symetrian™ supported increased CD3+ T-cells, CD4+ helper T-cell, CD8+ Cytotoxic T cells, NKp46+ Natural Killer cells, CD4+TCR $\gamma\delta$ + Gamma delta T cell levels, IgA, demonstrating that the composition primes the immune system and causes expansion of innate and adaptive immune cell populations (Figure 9)

Fig. 2: Synergistic effects of Symetrian™ (UP360) and its individual components in reducing mortality rate

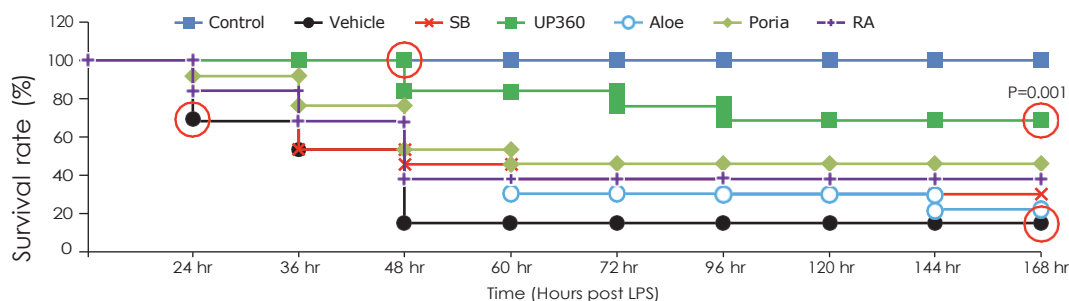
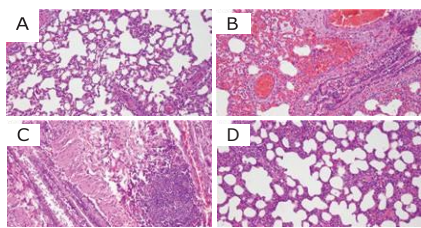


Fig. 3: H&E stain of lung tissue from LPS induced rats supplemented with Symetrian™ (UP360) at 500 mg/kg.



A=normal control, B= Vehicle control, C= Sodium Butyrate, D= UP360 (500 mg/kg). Magnification 100x.

Fig. 6: Thymus indices from immune senescent mice supplemented with Symetrian™ (UP360)

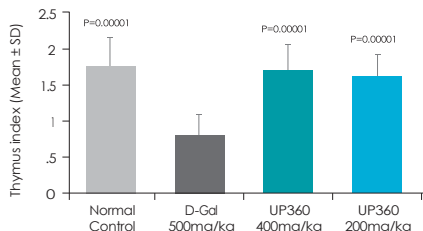
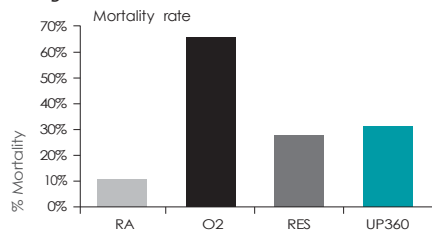


Fig. 4: Mortality rate of mice exposed to hyperoxia conditions and infected with *P. aeruginosa*.



RA= room air control, O2= hyperoxia condition, RES= Resveratrol in hyperoxic condition, D= Symetrian™ (UP360) (500 mg/kg) in hyperoxia condition

Fig. 5: Bacterial loads in the bronchial alveolar lavage fluid from *P. aeruginosa*-infected mice.

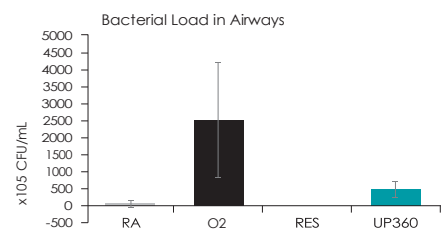


Fig. 7: Serum SOD enzyme (U/mL) from immune senescent mice supplemented with Symetrian™ (UP360)

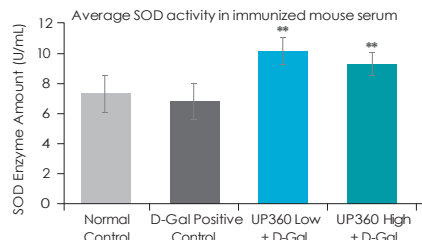


Fig. 8: Relative Nrf2 protein from immune senescent mice and Symetrian™ (UP360)-supplemented mouse spleens

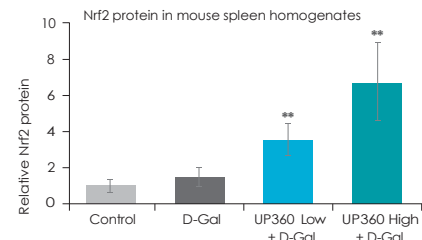


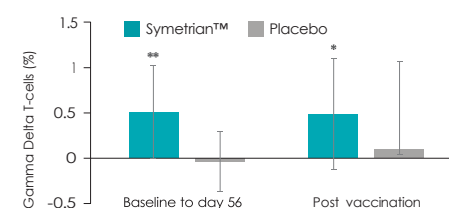
Fig. 9: Summary of innate and adaptive immunity markers stimulated by Symetrian™ in the immune senescent mouse model



Clinical Data on Immune Support

- Supplementation with Symetrian™ 500 mg twice per day was found to increase expansion of Gamma Delta ($\gamma\delta$) T Cells (Figure 10) suggesting a more robust cellular response highlighting its primarily role in first line of defense and immune surveillance
- Symetrian™ supplementation showed statistically significant increase in influenza B-specific IgG levels, in the post-vaccination period indicating enhanced support of humoral protective immunity
- Supplementation with Symetrian™ supported increased serum glutathione peroxidase (GSH-Px) levels highlighting improved antioxidation capacity
- Symetrian™ supplementation produced statistically significant increase in the level of serum IL-1RA, indicating its property maintaining healthy cytokine response

Fig. 10: Differences in $\gamma\delta$ T-cells population

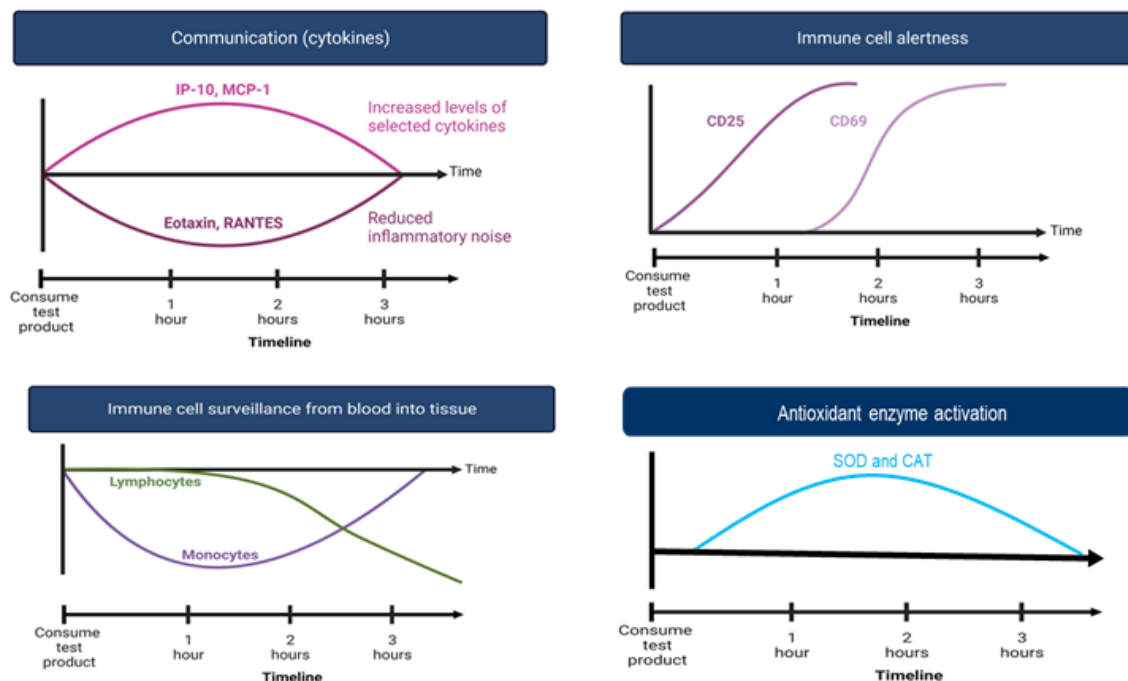


The results of this randomized, triple-blind, placebo-controlled study indicated that supplementation with Symetrian™ at 500 mg twice per day significantly supported heightened immune surveillance as a result of expansion of the Gamma delta T-cells compared to placebo. Through the course of the supplementation, subjects who were given Symetrian™ showed a gradual increase in the level of these T cells, moving from day 28 to day 56, where Symetrian™ showed 21.5% and 24.5% increase in the percent of TCR $\gamma\delta$ + cells populations at days 28 and 56 post supplementation, respectively. In contrast, the placebo group showed decreases in this cell population at the same time frame where 10.5% and 5.6% reduction in the percent of TCR $\gamma\delta$ + cells were observed at days 28 and 56 post supplementation, respectively. Compared to placebo, subjects who received Symetrian™ showed 23.5% and 38.9% increases in the percent of TCR $\gamma\delta$ + cells populations at days 28 and 56 post supplementation, respectively.

Clinical Data on Rapid Immune Modulation

- Supplementation with Symetrian™ at 500 mg single oral dose showed rapid immune activation and proliferation in a randomized double-blind placebo controlled cross over human clinical study
- Supplementation with Symetrian™ showed progressive activation in the numbers of lymphocytes (NKT cells, NK cells; cytotoxic T cells, $\gamma\delta$ T cells) over a 3-hour period in the blood where the percent changes were found statistically significant against placebo
- Supplementation with Symetrian™ increased activation markers (CD25, CD69 and CD56) on innate and adaptive immune cell populations (monocytes, NK cells, NKT cells, and $\gamma\delta$ T cells) as early as 1 hour post 500 mg oral supplementation. The CD25 increase after 1 hour and 2 hours was statistically significant for the NKT cells and $\gamma\delta$ T cells, respectively

Fig. 11: Rapid activation and proliferation of first line of defense by Symetrian™



Collectively, rapid activation of NKT cells and $\gamma\delta$ T cells, expansion of $\gamma\delta$ T cell, monocyte and lymphocyte populations for immediate mucosal response and immune surveillance, increased Influenza B-specific IgG antibodies for boosted immune response, augmented GSH-Px activity for a better equipped antioxidation capacity and enhanced healthy cytokine responses as a result of increased level of IL-1-RA, suggest the beneficial use of Symetrian™ for a healthy immune support and balanced response for immune homeostasis.

UNiGEN

Bring the inspiration of science to your business

2121 South State Street, Suite
400 Tacoma, WA 98405
Phone: 253.274.7160
www.unigen.net

REFERENCES

1. Beyer WE, Van der Logt JT, van Beek R, Masurel N, Immunoglobulin G, A, and M response to influenza vaccination in different age groups: effects of priming and boosting. J Hyg (Lond). 1986 Jun;96(3):513-522.
2. Sabbaghi A, Miri SM, Keshavarz M, Mahooti M, Zebardast A, Ghaemi A. Role of $\gamma\delta$ T cells in controlling viral infections with a focus on influenza virus: implications for designing novel therapeutic approaches. Virology Journal 2020;17(1):174. doi: 10.1186/s12985-020-01449-0.
3. Swarup V, Ghosh J, Ghosh S, Saxena A, Basu A. Antiviral and anti-inflammatory effects of rosmarinic acid in an experimental murine model of Japanese encephalitis. Antimicrob Agents Chemother. 2007 Sep;51(9):3367-70.
4. Novak M, Vetvicka V. Beta-glucans, history, and the present: immunomodulatory aspects and mechanisms of action. J Immunotoxicol. 2008 Jan;5(1):47-57.
5. Sierra-Garcia GD, Castro-Rios R, Gonzalez-Horta A, Lara-Arias J, Chavez-Montes A. Acemannan, an Extracted Polysaccharide from Aloe vera: A Literature Review. Nat Prod Commun. 2014;9:1217-21.
6. Choi S, Chung MH. A Review on the Relationship between Aloe vera Components and their Biologic Effects. Semin Integr Med. 2003;1:53-62.
7. Bulut O, Kilic G, Domínguez-Andrés J, Netea MG. Overcoming immune dysfunction in the elderly: trained immunity as a novel approach. Int Immunol. 2020 Nov 23;32(12):741-753.
8. Yimam M, Horm T, O'Neal A, Jiao P, Hong M, Jia Q. UP360, a Standardized Composition from Extracts of Aloe barbadense, Poria cocos, and Rosemary officinalis Protected Against Sepsis and Mitigated Acute Lung Injury in Murine Models. J Med Food 2023 Jul;26(7):489-499. doi: 10.1089/jmf.2022.0136. Epub 2023 May 16.
9. Lewis ED, Crowley DC, Guthrie N, Evans M. Healthy adults supplemented with a nutraceutical formulation containing Aloe vera gel, rosemary and Poria cocos enhances the effect of influenza vaccination in a randomized, triple-blind, placebo-controlled trial. Front. Nutr., 24 April 2023 Sec. Nutritional Immunology Volume 10 - 2023 | https://doi.org/10.3389/fnut.2023.1116634
10. Yu L, McGarry S, Cruickshank D, Jensen GS. Rapid increase in immune surveillance and expression of NKT and $\gamma\delta$ T cell activation markers after consuming a nutraceutical supplement containing Aloe vera gel, extracts of Poria cocos and rosemary. A randomized placebo-controlled cross-over trial. Plos One September 12, 2023 https://doi.org/10.1371/journal.pone.0291254